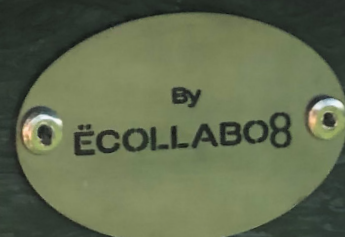


ÉCO  LIVING
DESIGN

#zerowaste





eCollabo8 is an Indonesian-based plastic recycling company established in 2019 with the goal of promoting the value of waste and collaborating with brands to make a positive impact on the environment through our innovative technologies. We aim to educate and empower local communities while producing a wide range of products, from everyday items like combs and mirrors to high-end indestructible outdoor furniture.



Sedex Member

We use SEDEX/SMETA tools and audits with a view to continuous improvement, ensuring that our activities are based on ethical principles with respect for human and labour rights, as well as the environment, health and safety at work.

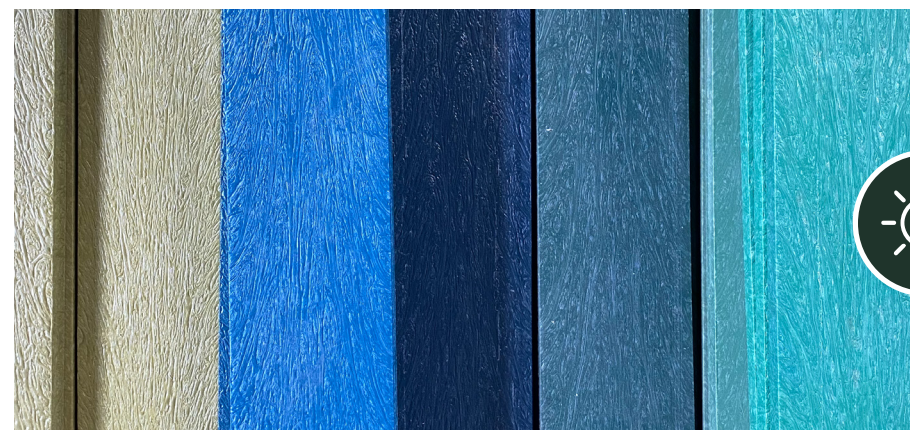
As Sedex members, we aim to contribute to a more sustainable supply chain.



WEATHER RESISTANT



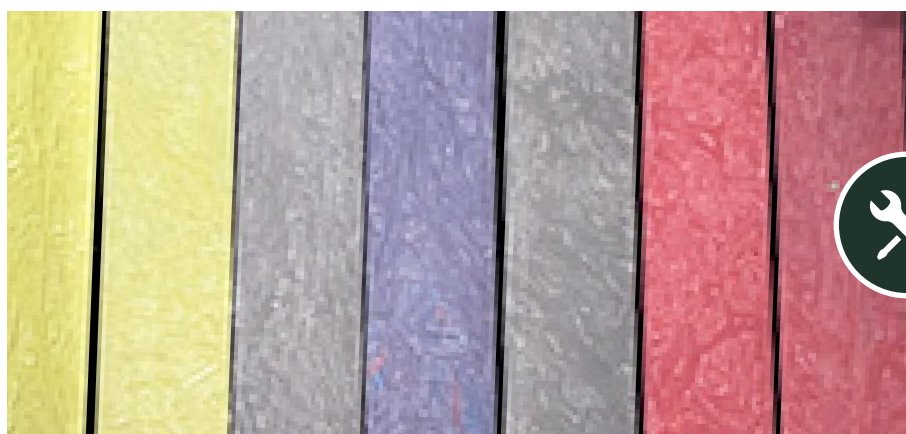
Our all-weather outdoor furniture is designed to withstand the rigors of various seasons and climates. It is able to endure the heat of the sun, the salt spray of coastal areas, and the heavy winds without showing any signs of wear and tear. This makes it a durable and sustainable choice for outdoor use.



COLOR STAY TECHNOLOGY



Our lumber is protected from environmental damage by the use of UV inhibitors and stabilizers that are integrated throughout the material. These protectors shield the material from UV radiation, preventing it from cracking, fading or becoming brittle.



LOW MAINTENANCE



Our eco8 lumber is easy to maintain as it can be cleaned with just soap and water, and does not require any additional painting, staining, or waterproofing. This feature makes it an easy and convenient option for outdoor use.



SUSTAINABILITY



ECOLLAB08 is dedicated to reducing waste and preserving the environment by recycling millions of plastic containers that would otherwise end up in landfills or oceans. This commitment to sustainability is at the core of our operations, and we have been actively working towards this goal since our inception, with the aim of leaving a positive impact for future generations.



» LOUNGE CHAIR



Adirondack Chair
AD001-8

• Made Using 100% Recycled Plastic

H 100cm • W 65cm • D 80cm

Weights 28kg



Yatch Chair
YC002-8

• Made Using 100% Recycled Plastic

H 78.5cm • W 62cm • D 75cm

Weights 21.5kg



Adirondack Foot Stool
ADF003-8

• Made Using 100% Recycled Plastic

H 42cm • W 55cm • D 42cm

Weights 9.5kg



Yatch Foot Stool
YCS004-8

• Made Using 100% Recycled Plastic

H 39cm • W 49.9cm • D 46cm

Weights 7.5kg

Our all-weather material is designed to withstand all types of weather conditions.

» CHAISE LOUNGE • SUN BED



**Modern Chaise
MCL005-8**

- Made Using 100% Recycled Plastic

H 90cm • W 75.1cm • D 195cm

Weights 35kg



**Classic Chaise
CL006-8**

- Made Using 100% Recycled Plastic

H 91cm • W 65cm • D 192cm



**Lounge
Chair
LC007-8**

- Made Using 100% Recycled Plastic

H 79cm • W 67.5cm • D 67cm Weights 18.5kg



**Deep
Seater
2 Seater
DS2-008-8**

- Made Using 100% Recycled Plastic

H 76.3cm • W 125.6cm • D 76cm Weights 30kg



**Classic
Sofa Retro
CSR-009-8**

- Made Using 100% Recycled Plastic

H 63.9cm • W 199cm • D 62.3cm Weights 45kg



**Harbor
Sofa
HB-010-8**

- Made Using 100% Recycled Plastic

H 80cm • W 181cm • D 78cm Weights 45kg

» ACCENT TABLE



**Modern
Accent
Table
MA011-8**

- Made Using 100% Recycled Plastic

H 40cm • W 47.5cm • L 78.5cm Weights 15.5kg



**Classic
Accent
Table
CA012-8**

- Made Using 100% Recycled Plastic

H 38cm • W 53.1cm • L 89cm Weights 13.5kg



**Poolside
Accent
Table
PSA013-8**

- Made Using 100% Recycled Plastic

H 40cm • W 52.5cm • L 52.5cm Weights 11.5kg



**Melia
Accent
Table**

- Made Using 100% Recycled Plastic

H 43cm • W 53cm • D 53cm Weights 11.5kg



**Modern
Square
Accent
Table
MSA015-8**

- Made Using 100% Recycled Plastic

H 25cm • W 39.7cm • L 39.7cm Weights 5.8kg

» DEEP SEATING MODULAR



**Modern
Modular
Right
MMR016-8**

- Made Using 100% Recycled Plastic

H 77cm • W 68cm • D 77.9cm

Weights 14.5kg



**Modern
Modular
Middle
MMM017-8**

- Made Using 100% Recycled Plastic

H 77cm • W 64.5cm • D 77.9cm

Weights 13.5kg



**Modern
Modular
Corner
MMC018-8**

- Made Using 100% Recycled Plastic

H 77cm • W 77.9cm • D 77.9cm

Weights 20kg



**Modern
Modular
Left
MML019-8**

- Made Using 100% Recycled Plastic

H 77cm • W 68cm • D 77.9cm

Weights 14.5kg



**Modern
Modular
Foot Stool
MMF020-8**

- Made Using 100% Recycled Plastic

H 31.8cm • W 64.5cm • D 54cm

Weights 7.7kg



Country Dining Table
CDT-021-8

• Made Using 100% Recycled Plastic

H 74cm • W 82.4cm • L 135.5cm Weights 40kg



Paris Café Table
PCT-022-8

• Made Using 100% Recycled Plastic

H 74.9cm • W 85.5cm • L 85.5cm Weights 28kg



Beach Dining Chair
BDC-023-8

• Made Using 100% Recycled Plastic

H 90cm • W 42cm • D 51.5cm Weights 12kg



Paris Café Chair
PCC-024-8

• Made Using 100% Recycled Plastic

H 85cm • W 48cm • D 52.9cm Weights 12kg



**Dog Feeder
DF-025-8**

- Made Using 100% Recycled Plastic

H 30cm • W 28cm • L 61cm

Weights 5.5kg



**Plant Pot
Small
PPS026-8**

- Made Using 100% Recycled Plastic

H 40cm • W 37.9cm • D 37.9cm

Weights 14.5kg



**Console
Table
CT028-8**

- Made Using 100% Recycled Plastic

H 74cm • W 39.7cm • L 135.5cm

Weights 33kg



**Plant Pot
Large
PPL027-8**

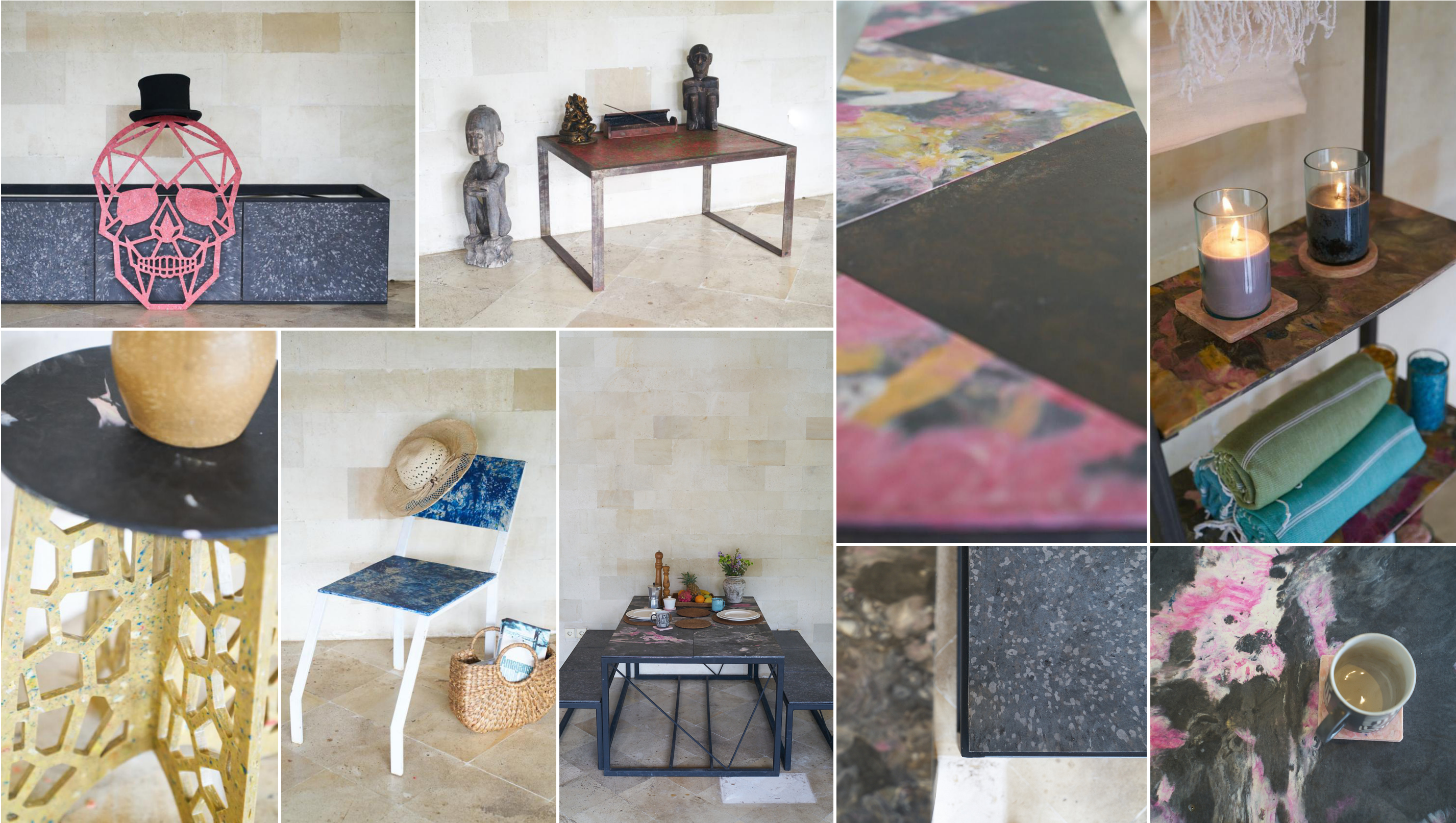
- Made Using 100% Recycled Plastic

H 44cm • W 37.9cm • D 80cm

Weights 23.4kg

Our recycled plastic outdoor furniture is made to withstand environmental damage, thanks to UV inhibitors and stabilizers that are added to the material during the manufacturing process. These inhibitors protect the plastic from sunlight, so that it doesn't crack, fade or become brittle over time.

» INDOOR CUSTOM MADE FURNITURE





OUR CLIENTS ARE **WELCOME TO PROPOSE DESIGNS** THAT
ALIGN WITH THEIR COMPANY / BRAND CHARACTER.
WE ACCEPT CUSTOMIZE ORDER, AND IF NEEDED, WE CAN
WORK TOGETHER WITH THE CLIENT FOR THE DESIGN.

WE WILL APPLY **20% DISCOUNT** FOR OUR WASTE MANAGEMENT PARTNER

✉ info@ecollabo8.com

in @ j ecollabo8

www.ecollabo8.com